

Specification Sheet

Traffic Barrier System

Basic Dimensions:

A - 60-5/8" (1540 mm) Length
B - 17-3/4" (450 mm) Base Width
C - 21-5/8" (550 mm) Height
D - 5-7/8" (150 mm) Top Deck Width

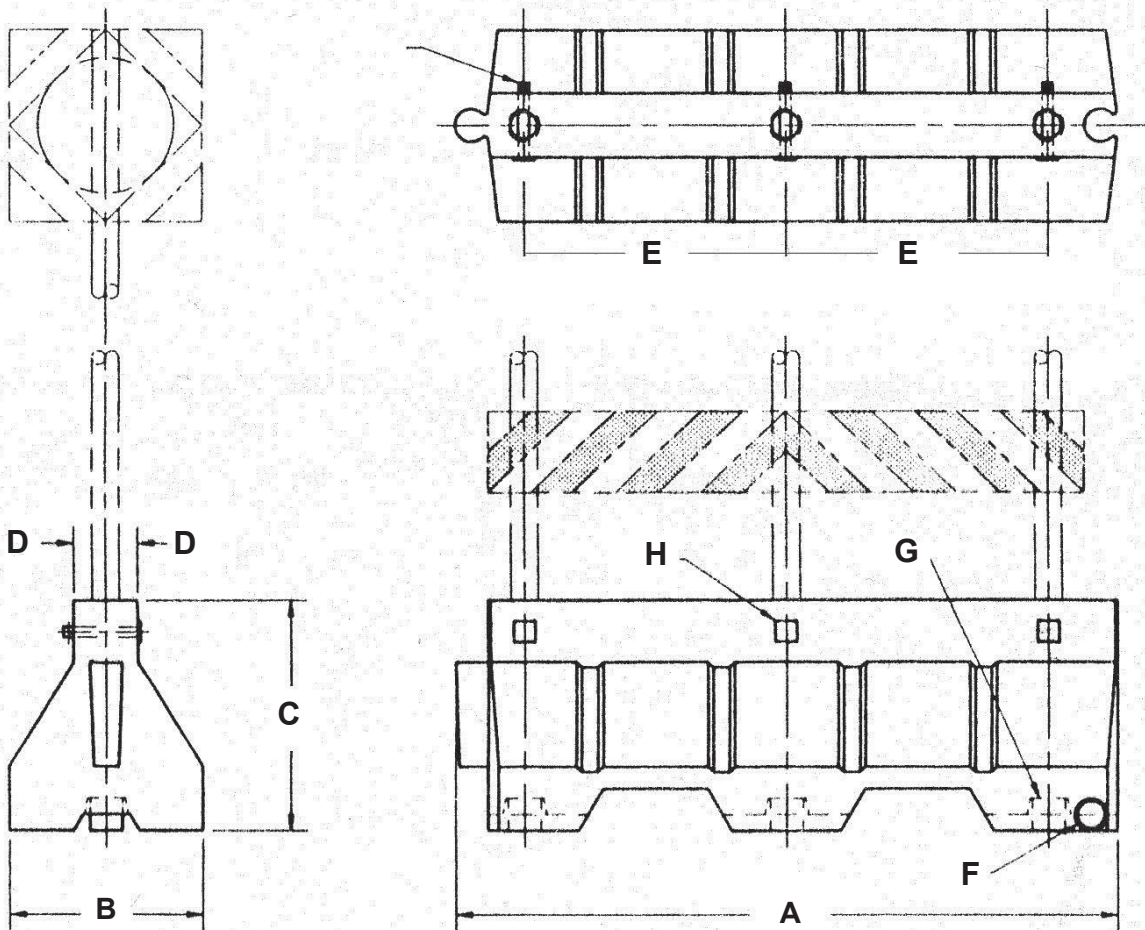
E - 24" (610 mm) Alternate Post Locations (3)
F - 2" (50 mm) Drain Plug
G - Post Pocket (3)
H - Post Lock (1-3)

Weight:

Base only - no posts or signs
Empty 33 lbs. (15 Kg.)
Water filled 400 lbs. (180 Kg.)
Sand filled 600 lbs. (270 Kg.)

Wall Thickness 3/16"

Rotationally molded using virgin polymers



If using water-filled barriers in areas where freezing and thawing may occur, there are two options.

1. Fill the water to within 8" from the top. This allows room for expansion as the water freezes.

- THIS IS THE RECOMMENDED METHOD

2. Add 1-1/2 gallons of Calcium Chloride to each barrier. Calcium Chloride is very effective in lowering the freezing or melting point of water.